

TAO 3672

71 3/4" x 36" x 22 3/4"



**PRODUCT DESCRIPTION:**

Adjustable feet  
 Contemporary style  
 Gloss finish resistant to stains and discoloration  
 Acrylic thermoformed and reinforced with fiberglass  
 Available with 2" flange only

5 days

<b>WATER CAPACITY:</b> 103 gallons	<b>IMMERSION:</b> 19 po
<b>BOX SIZE:</b> 74" x 36 1/2" x 24 1/2"	
<b>NET WEIGHT:</b> 78 lbs	<b>GROSS WEIGHT:</b> 97 lbs

Includes drain and Ultim-0 overflow assembly.

**GENERAL OPTIONS**

**Ultim-0 overflow and waste included:** Chrome

**Acrylic Colors:** White Standard  
 Biscuit\* and Bone\* (Allow 3 weeks delivery) Standard  
 Others\*: (Allow 6 to 8 weeks delivery) Standard

<b>Chromotherapy 1 light</b> (Specify trim color)	17.99999.0000.00
<b>Chromotherapy 2 lights</b> (Specify trim color)	17.99999.0001.00
<b>Chromotherapy 4 lights</b> (Specify trim color)	17.99999.0002.00
<b>Handle</b> (max. 4) (submit drawing with order)	95.7077.106.XX
<b>Gel black neck pillow</b> (12"x 4 1/4 x 1 1/4")	18.6000.100.20
<b>Rayola**</b> (Specify control color) Available for bathtub without system only	

**WHIRLPOOL OPTIONS**

**A bathtub fitted with back jets may cause the pump to protrude by +/- 3" from the overall dimension.  
 Pump is installed on the left side of the drain (non-negotiable)**

<b>Whirlpool Jet finish:</b> Chrome, White, Biscuit, Bone	Standard
<b>110v Inline Heater</b>	
<b>Ozonator</b>	
<b>TurboAir</b> (1)	

**MASS-AIR/ACTIV-AIR OPTIONS**

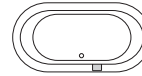
<b>Mass-Air Jet finish:</b> White/Chrome Standard Biscuit/Chrome Bone/Chrome Others: Chrome/Chrome	
<b>Activ-Air Jet finish:</b> Chrome, White, Biscuit, Bone	Standard
<b>Blower Hose extension 72"</b>	95.5013.167.00
<b>Blower Hose extension 96"</b>	95.5013.168.00
<b>144" Extension cord</b>	95.3012.101.00

**An extension cord and blower hose extension are necessary when the blower is located more than 2' from the electronic control, not available on whirlpool combos.**

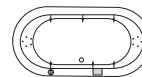
**TONIC OPTIONS**

<b>Tonic Jet finish:</b> White, Biscuit, Bone, Chrome	Standard
---	----------

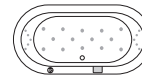
\*Customized products, non cancellable, non returnable.  
 \*\*Not available with a neck pillow.



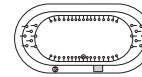
**Bathtub only** **TAO3672**



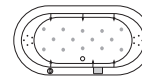
**Whirlpool** **TAO3672T**  
 Included: 6 turbo jets, 10 micro-rotating back jets, 13 A pump, two diverter valves and electronic control.



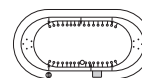
**Mass-Air** **TAO3672M**  
 Included: 24 (14-10) injectors, Optima blower 750W (1 1/2 h.p.) with 300W heating element and backlit electronic control.



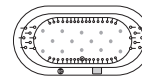
**Activ-Air** **TAO3672A**  
 Included: 50 micro-jets, Optima blower 750W (1 1/2 h.p.) with 300W heating element and backlit electronic control.



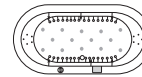
**Mass-Air/Whirlpool Combo** **TAO3672C**  
 Included: 6 turbo jets, 10 micro-rotating back jets, 14 Mass-Air injectors, 13 A pump, Optima blower 750W (1 1/2 h.p.) with 300W heating element, two diverter valves and backlit electronic control.



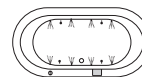
**Activ-Air/Whirlpool Combo** **TAO3672CA**  
 Included: 6 turbo jets, 10 micro-rotating back jets, 34 Activ-Air micro-jets, 13 A pump, Optima blower 750W (1 1/2 h.p.) with 300W heating element, two diverter valves and backlit electronic control.



**Mass-Air/Activ-Air Combo** **TAO3672CMA**  
 Included: 50 Activ-Air micro-jets, 14 Mass-Air injectors, two Optima blowers 750W (1 1/2 h.p.) with 300W heating element and backlit electronic control.



**Activ-Air/Mass-Air/Whirlpool Combo** **TAO3672TAM**  
 Included: 6 turbo jets, 10 micro-rotating back jets, 34 Activ-Air micro-jets, 14 Mass-Air injectors, 13 A pump, two Optima blowers 750W (1 1/2 h.p.) with 300W heating element, two diverter valves and backlit electronic control.



**Tonic** **TAO3672Q**  
 Included: 8 Oxygen jets, Optima blower 750W (1 1/2 h.p.) with 300W heating element, Syllent pump with integrated in-line heater, 4 Chromotherapy lights and backlit tactile electronic control.



**COMPLIANCE ATTESTATION**  
 Standard bathtubs  
 CAN / CSA.B45.5  
 Hydromassage Standards  
 CAN / CSA.B45.10 / CSA.C22.2 / UL-1795



**Certification ECORESPONSIBLE**  
 First manufacturer of bathroom products in North America to be certified ecoresponsible.



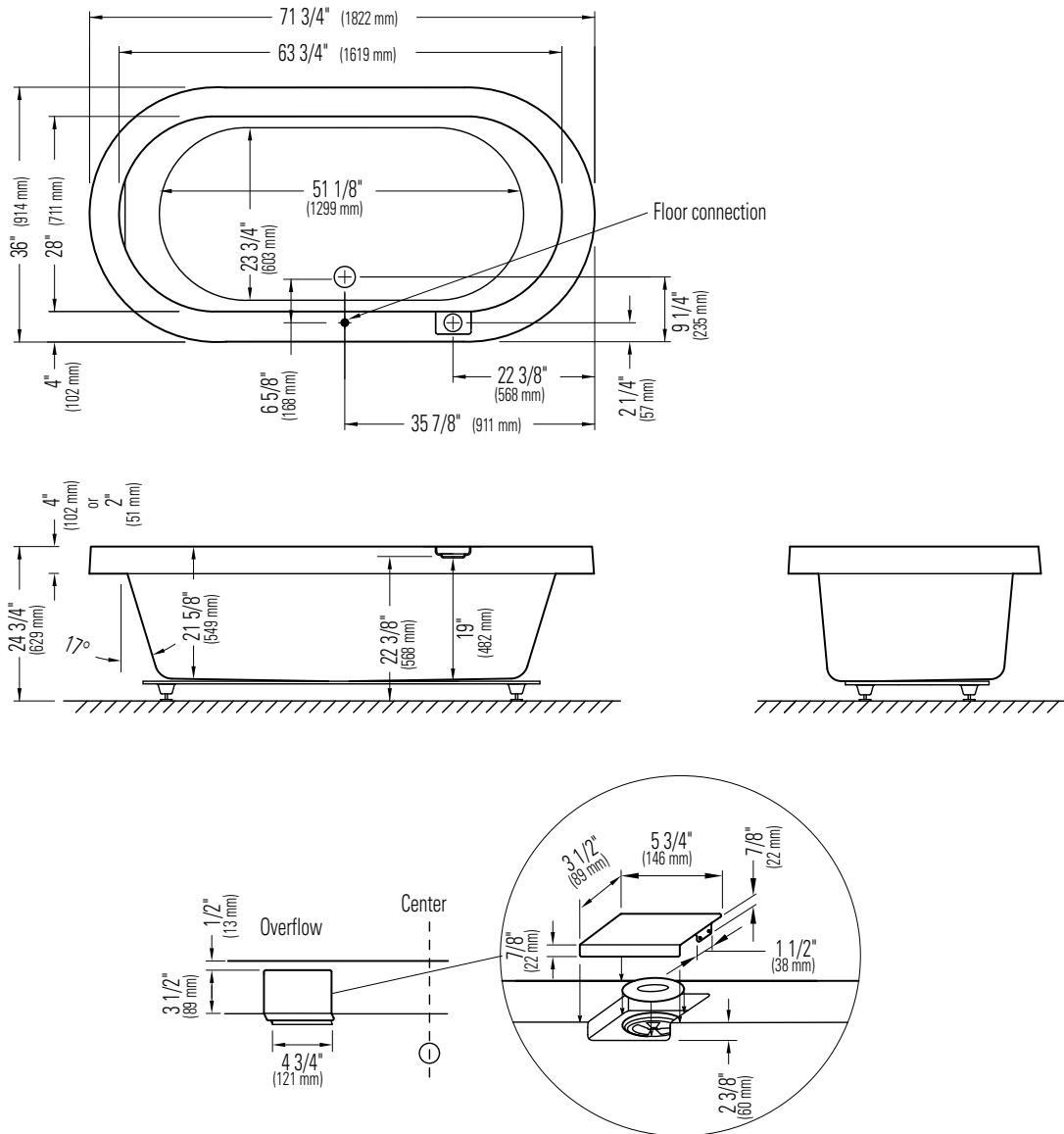
**Produits Neptune**  
 6835, Picard street, Saint-Hyacinthe (Quebec) J2S 1H3  
 Phone: (450) 773-7058 - Fax: (450) 773-5063  
 produitsneptune.com REV: 11-18



Produits Neptune

# TAO 3672

Bathtub



\*A bathtub fitted with back jets can cause the pump to protrude by approximately 3" from the overall dimension.

\*\*All dimensions are approximate and subject to change without notice. Please refer to the installation guide before beginning the installation