

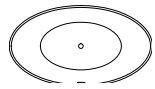
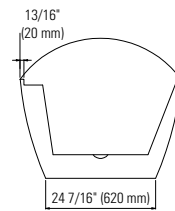
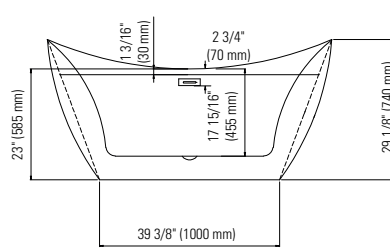
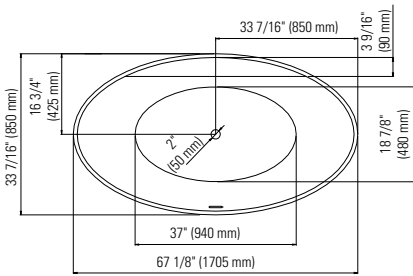
# MURANO F1 3466

67 1/8" x 33 7/16" x 29 1/8"



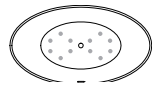
<b>PRODUCT DESCRIPTION:</b>	
Adjustable feet Contemporary style Above-the-floor rough (AFR) Integrated linear overflow and drain kit included, chrome	
<b>WATER CAPACITY:</b>	<b>IMMERSION:</b>
216.2 L	15 3/8 po
<b>BOX SIZE:</b>	
68 1/2" x 35 1/16" x 29 15/16"	
<b>NET WEIGHT:</b>	<b>GROSS WEIGHT:</b>
43 kg	56 kg

24-48hrs  
5 days



Bathtub only

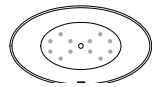
MUR3466F1



Mass-Air

MUR3466F1M

Included: 12 injectors, 750W (1 1/2h.p.) Optima blower, with 300W heating element, 72" blower hose extension, and remote control.



Rouge-Air

MUR3466F1A

Included: 12 micro-jets, 750W (1 1/2h.p.) Optima blower, with 300W heating element, 72" blower hose extension, and remote control.

## GENERAL OPTIONS

Overflow and waste included: Chrome

Acrylic Colour: White

Standard

Bathtub drain adapter (picture below)

Gel black neck pillow

White, brushed nickel or black overflow and drain kit

## MASS-AIR / ROUGE-AIR OPTIONS

Mass-Air Jet finish: White/Chrome

Standard

Others: Chrome/Chrome

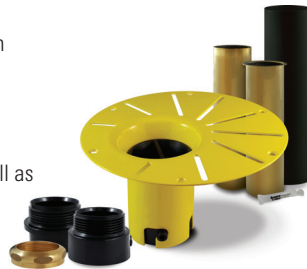
96" blower hose extension

A blower hose extension is required when the blower is located more than 4' from the bathtub.

## BATHTUB DRAIN ADAPTER

123Connect is a freestanding bathtub rough-in (install before tile).

- Quick, easy and clean installation.
- No access panel required.
- Allows for an installation as close to the wall as possible.



## LINEAR OVERFLOW



White



Brushed nickel



Chrome



Black



CONFORMITY ATTESTATION  
Bathtub Standards  
cUPC  
Hydromassage Standard  
CAN / CSA.B45.10 / CSA.C22.2 / UL-1795



ECORESPONSABLE Certification  
First manufacturer of bathroom products in North America to be certified ecoresponsible



Produits Neptune  
Rouge

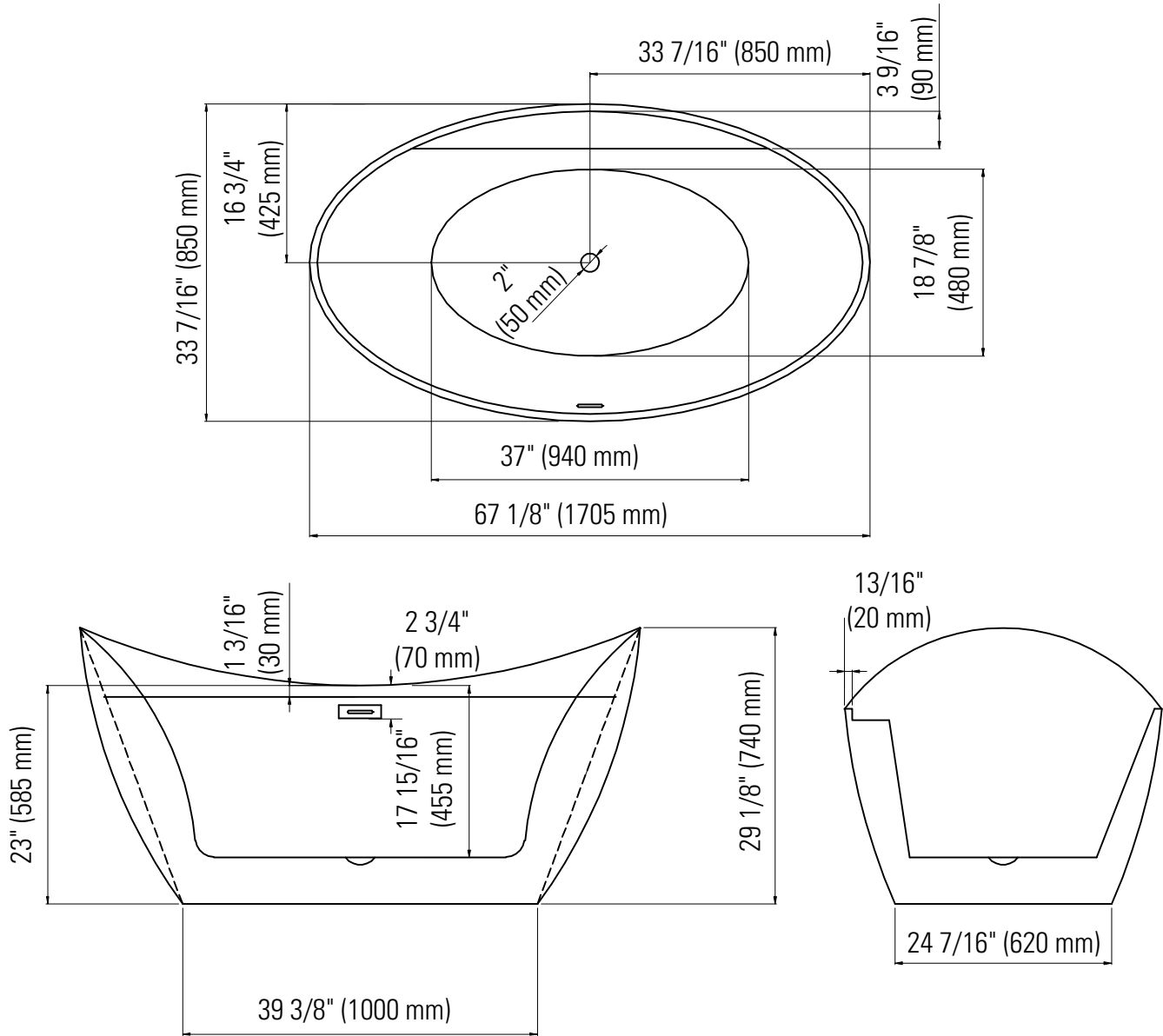
6835, Picard street, Saint-Hyacinthe (Québec) J2S 1H3  
Phone: (450) 773-7058 - produitsneptune.com



Produits Neptune  
Rouge

# Murano 3466 F1

Bathtub



Ajustable feet

Above-the-floor rough (AFR)

\*All dimensions are approximate and subject to change without notice

Please refer to the installation guide before beginning the installation